

DSV KELLY MORRISON



Capabilities

DSV *Kelly Morrison* is a 185 ft 4-point dive support vessel with capabilities to perform work in deeper water depths. It has the largest crane capacity and largest open deck space than any other vessel in its class, allowing for heavier and more efficient construction work capabilities. The telescoping 40-ton hydraulic crane with a vertical reach of 86 ft and a horizontal reach of 75 ft is used to assist in setting risers, riser clamps, boat landings and pre-fabricated spool pieces up to 120 ft in length.

The vessel's configuration provides support equipment such as diving compressors and jet pumps to be located below deck, leaving the 2,800 sq ft of main deck space open for the storage and fabrication of pipeline materials and components.

The *Kelly Morrison* accommodates 27 personnel, exclusive of the vessel crew, which allows for 24-hour diving capability.

The vessel has two generators on board and an emergency generator, further reducing the risk of downtime. The vessel's heavy anchors, 1-1/8 in anchor cables and winches allow for a firmer, solid rest on the sea bottom. This stable anchoring avoids the potential for unsafe anchor drags in congested areas during rougher seas.

In 2019, the vessel completed a major dry dock with upgrades to the vessel resulting in enhanced performance for safety and operational assurance. The vessel has fully updated capabilities, diving systems and certifications.

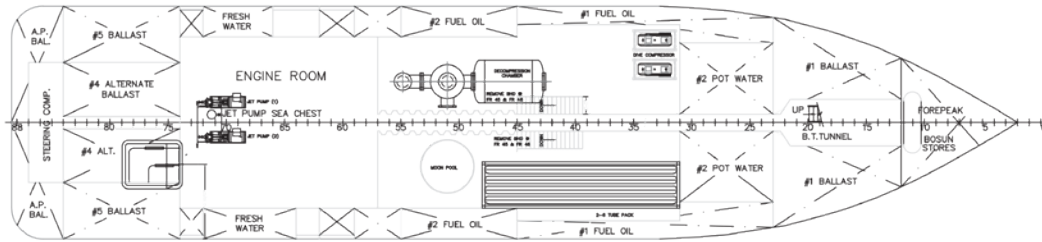
The DSV *Kelly Morrison* supports oil and gas operators and transmission companies handling a multitude of projects involving surface diving in the Gulf of Mexico with a higher level of safety and efficiency than similar vessels in its class.

General Description

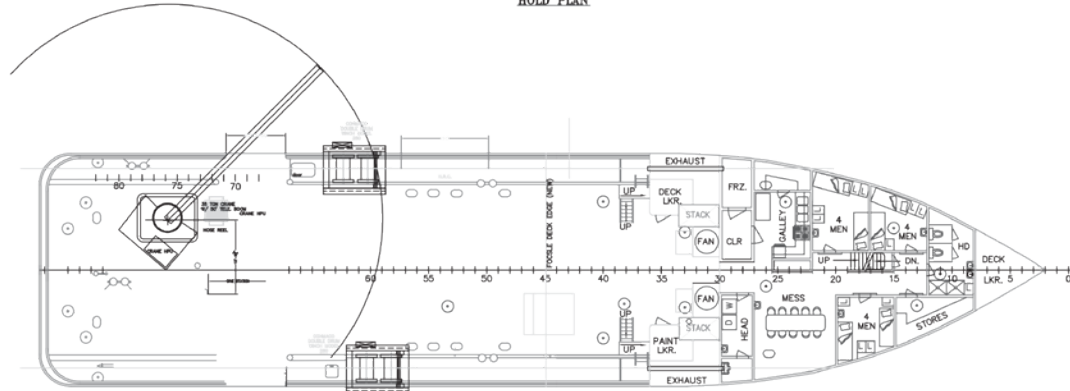
NAME	Kelly Morrison
TYPE	DSV / Dive Support Vessel
FLAG / CLASS	U.S.A. / ABS
DIMENSIONS	185 ft x 40 ft
OPEN DECK SPACE	2,800 sq ft
CRANE CAPACITY	40-ton hydraulic crane

Key Features

- 4-point anchor mooring system
- The largest open deck space for a vessel of its class
- The largest crane capacity for a vessel of its class
- Deep air / gas surface diving system
- Stable vessel suitable for rougher seas and congested areas



HOLD PLAN



MAIN DECK PLAN

Specifications

Length	185 ft
Width	40 ft
Molded depth	13 ft 6 in
Main deck	40 ft x 83 ft
Open deck space	2,800 sq ft

Capacity

Fuel	61,682 gal
Water	153,671 gal

Certifications

Flag	U.S.A.
Classification	ABS / USCG

Speed

Economic transit	10 knots
------------------	----------

Accommodations

Total accommodations	35 persons
----------------------	------------

Crane

Tonnage	40-ton Hydraulic
Crane Wire	900 ft
Model	Mantis model 8012

Machinery

Engines	(2) Caterpillar 3512
Propulsion	Twin Screw
Horsepower	2,250
Main generators	(2) 150 kw
Emergency generators	(1) 100 kw

Station Keeping

Winches	(2) Amcon 385 double drum
Wire	(4) 5,000 ft x 1-1/8 in
Anchors	(4) 10,000 lbs stockless

Diving Equipment

- Deep air / gas mixed surface diving station
- (2) Hyperbaric decompression chambers
- Built-in 6 in x 6 in jet pump
- (2) Built-in hydraulic packages
- 400 cfm / 135 psi air compressor

Rev2020.1

HOUSTON, TEXAS

16285 Park Ten Place, Suite 100
Houston, TX 77084
713.344.9233

CORPORATE MAILING ADDRESS

PO Box 3301
Houma, LA 70361

US | Mexico | West Indies

MorrisonEnergy.com